

## Insulation Program Procedures

### Pre-installation:

1. Customer Contacts Participating Installers (at right) to obtain PUD Insulation Incentive bids. Bids may vary *widely*; we suggest obtaining at least two bids.
2. Customer selects a bid, ensures that the customer information is accurate and complete, and authorizes the bid with their signature.
  - a. **Site-built Homeowners Only:** Floor insulation incentives for site-built homes require a pre-job pest inspection report less than a year old.
3. Signed and fully-completed PUD Insulation Bid (and current pest inspection report if applicable) is/ are returned to any PUD office or mailed to Clallam County PUD Weatherization, POB 1090, Port Angeles, WA 98362.
4. PUD reviews bid for eligibility and completeness. Once all initial program requirements are met, the PUD will authorize the bid and provide the Installer with a *Notice to Proceed*.  
*Note: program participation is not approved until the PUD signs the Customer-selected bid.*
5. Installer schedules insulation job with customer.
6. Insulation and mechanical ventilation (if applicable) are installed.

### Post-installation:

1. Installer bills PUD for the incentive amount.
2. Within 15 working days of job completion and receiving all required documents from the Installer, the PUD may schedule an on-site verification visit to ensure that PUD/BPA requirements were met.
3. Once all job specs are met and verified, PUD issues incentive payment to the Installer.

### Note:

Bonneville Power Administration (BPA) reserves the right to audit PUD incentive programs. A BPA representative may contact you to schedule an inspection of the PUD incentive work at your home.

## Participating Installers

**C&F Insulation**  
PO Box 2197, Sequim  
(360) 681-0480

**Everwarm**  
257151 Highway 101, Port Angeles  
(360) 452-3366 (Site-built homes only)

**Orkin, Inc.**  
5013 Pacific Hwy. East, Suite 12, Fife  
(877) 250-1652

**PJ's Home Energy Services**  
3627-A Wheaton Way, Bremerton  
(360) 377-6119 (Floors only)

**Statewide Construction**  
PO Box 1198, Port Townsend  
(800) 385-5018 (Pre-1992 manufactured homes only)

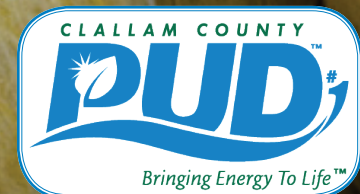
**Tracy's Insulation**  
PO Box 567, Port Angeles  
(360) 582-9600 (Site-built homes only)

### Note:

Participating Installers have signed an agreement with the PUD confirming that they will meet all PUD/BPA program requirements, posted surety bonds and obtained insurance, naming the PUD as additionally-insured.

February 2012

## Residential Insulation Incentive Programs



# Insulation, Air Sealing & Mechanical Ventilation



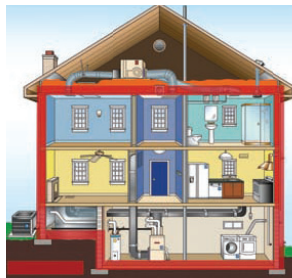
Air leakage and inadequate insulation are two of the leading causes of heat loss in most homes. When properly installed in the right location and right amount, insulation, air sealing and mechanical ventilation can provide the most cost-effective means of achieving home comfort and reducing heating costs.

## Terms to Know:

**R-value:** is a measure of insulation's resistance to heat flow. The higher the R-value, the better the thermal performance of the insulation. Installing more insulation in your home increases the overall R-value and resistance to heat flow. The R-value of thermal insulation depends on the type of material as well as its thickness and density.

**Home Envelope:** the "shell" of your home, i.e., its outer walls, windows, doors, ceiling and floors. Properly sealing and insulating your home envelope can reduce your home heating costs by 20-percent.

Graphic credit: U.S. EPA



## Additional Resources:

- [www.clallampud.net/conservation](http://www.clallampud.net/conservation)
- [www.energystar.gov](http://www.energystar.gov)
- [www.energysavers.gov](http://www.energysavers.gov)
- [www.ornl.gov/sci/roofs+walls/insulation](http://www.ornl.gov/sci/roofs+walls/insulation)

# Insulation & Air Sealing Incentives

## Site-built Homes:

**Incentives not to exceed 60% of total cost.**

- Ceiling insulation: \$0.90/ft<sup>2</sup> (with pre-existing insulation ≤ R18)
- Wall Insulation: \$0.61/ft<sup>2</sup>
- Floor Insulation \$0.90/ft<sup>2</sup> (with no pre-existing insulation)



## Pre-1992 Manufactured Homes:

- Ceiling/Roof/Floor insulation: \$ 0.50/ft<sup>2</sup>
- Air-sealing: \$160.00

## Example: 2,000 ft<sup>2</sup> Floor Insulation Jobs\*\*

Upgrade Floor R-7 to R-20	Total Cost	PUD Incentive	Customer Cost
Site-built	\$2,500	\$1,500	\$1,000
Manufactured	\$2,600	\$1,000	\$1,600

\*\*Examples only. Insulation costs & incentives will vary.

## Why does the PUD offer these incentives?

It's cheaper for us to conserve energy than to purchase more power on the open market. PUD incentive programs not only help you to keep your energy costs down while making your home more comfortable, they also allow us to acquire energy savings for the lifetime of your new insulation/heat pump/duct-sealing job/windows/washer/water heater/etc.. So, by reducing your energy use, you're helping us to keep all customers' energy costs down. *Thanks!*

## Besides the financial incentive, is there any benefit to going the PUD route?

Two words: energy efficiency. We require all Participating Installers to meet PUD/Bonneville Power Administration specs for high efficiency installations. Then, we go the extra mile with an on-site visit to verify compliance.



## Program Requirements & Restrictions

**Restrictions apply. Eligibility for this incentive requires that all relevant requirements and specifications be met, including those below:**

- Only the legal homeowner(s) may apply.
- Insulation and air-sealing projects must be approved by the PUD **prior** to purchase and installation. Retroactive/post-installation requests are *ineligible*.
- New construction and major remodels are ineligible.
- Only pre-1992 manufactured homes are eligible for manufactured home incentives.
- Insulation and air-sealing must be installed by a PUD Participating Installer; **no exceptions**.
- Rooms receiving insulation &/or air sealing must have permanently installed, hard-wired electrical heat powered by PUD electricity.
- Site-built homes which at any time had:
  - wall or floor insulation, are ineligible for wall/floor incentives.
  - attics with greater than R-18 insulation, are ineligible for attic insulation incentive.
- Site-built floor insulation incentives require a pre-job pest inspection report less than one year old.
- Jobs at pre-1978 homes affecting 6ft<sup>2</sup> or more of painted interior surfaces must meet EPA renovation requirements. Contact Installer(s) for details.

**Incentives may be modified/discontinued at any time.**

**For more information, contact our Conservation Dept. at (360) 565-3249 OR (800) 542-7859 x249**